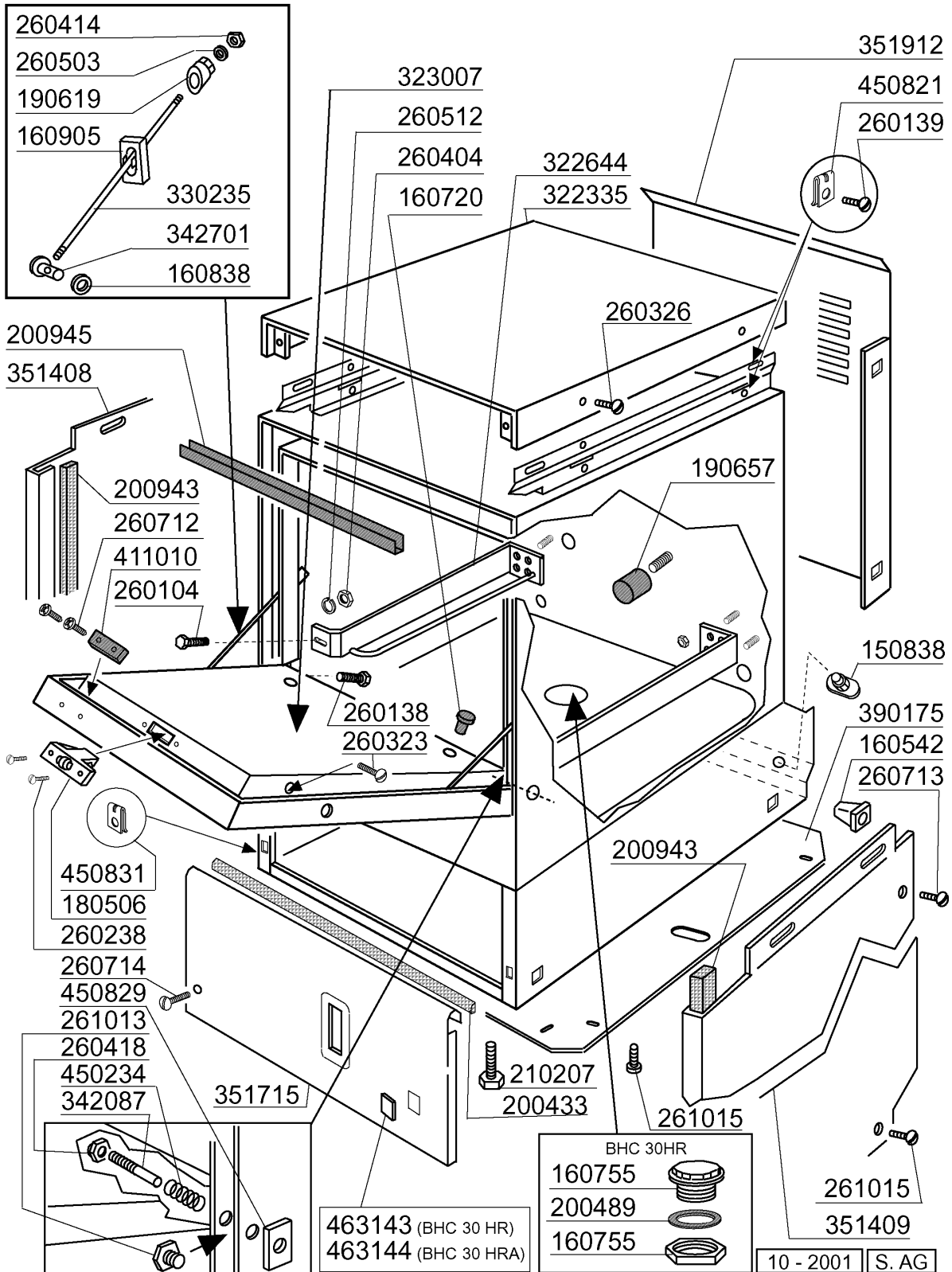


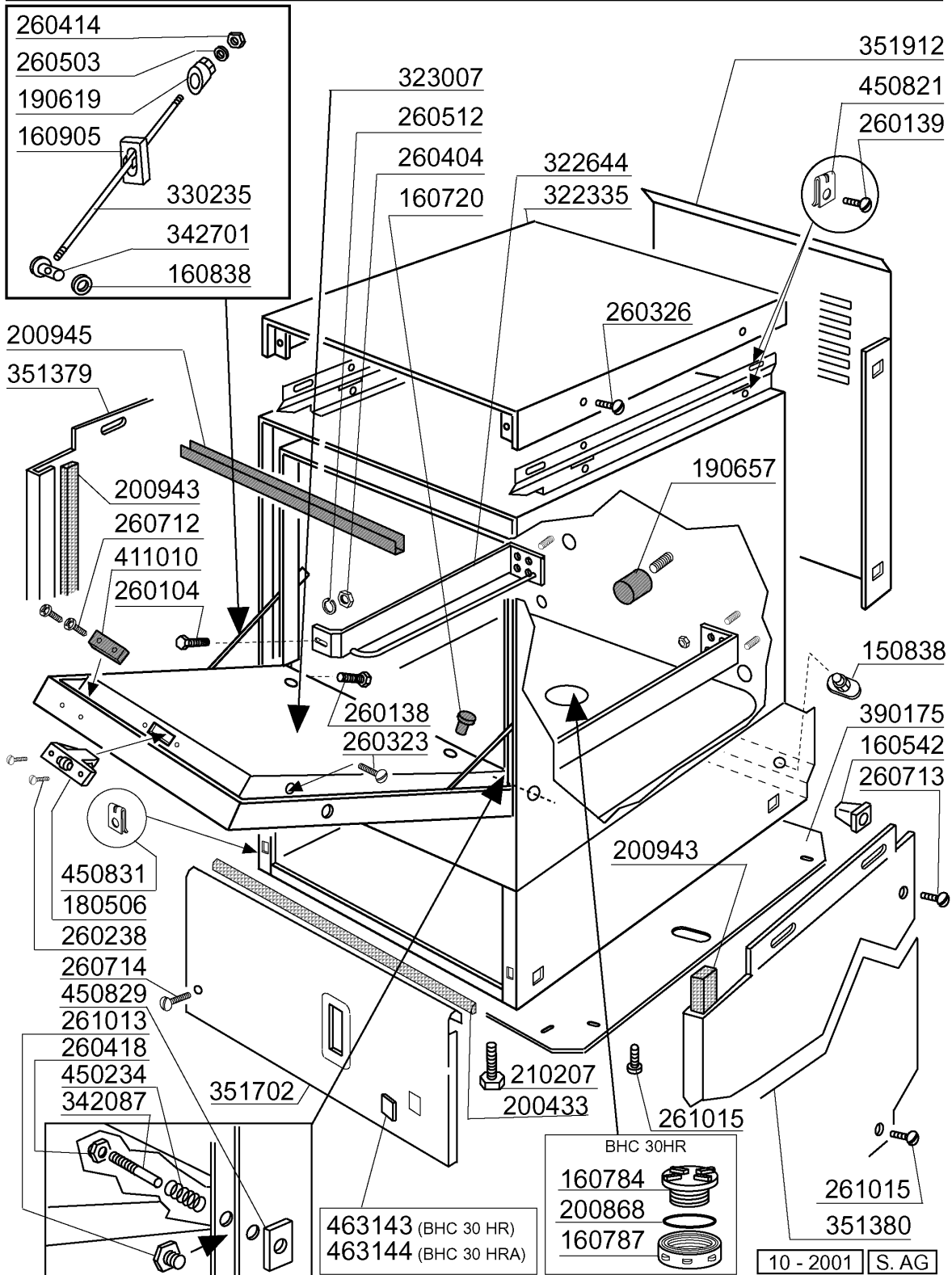
dalla matricola - a partir de la matr. - from serial no. - ab Serienr. - despues la matr. 9401/09/01



2 - Hood

| CODE | DESCRIPTION |
|--------|--------------------------------|
| 150838 | CABLE HOLDER FOR BHC |
| 160542 | SCREW SUPPORT |
| 160720 | PLUG HEYCO D.8 |
| 160755 | PLUG FOR MACHINES WITHOUT SOFT |
| 160838 | SLIDING WASHER TIE ROD FC |
| 160905 | SLIDING PLATE F. TIE ROD |
| 180506 | DOOR CATCH BR-BC-FC |
| 190619 | DOOR CATCH B-F-R |
| 190657 | RACK STOP BHC |
| 200433 | SPONGY RUBBER RECT. 6X2,5 ADHE |
| 200489 | GASKET 81X68X3 |
| 200943 | GASKET |
| 200945 | DOOR GASKET BHC |
| 210207 | FOOT BHC |
| 260104 | STAINL.ST TE-SCREW A2 6X16 UNI |
| 260138 | SCREW TE 4X10 |
| 260139 | SCREW TE 5X16 |
| 260238 | M4 X 10 MUSH/HD SCREW |
| 260323 | SCREW TSP 5X20 |
| 260326 | SCREW TS 5X10 |
| 260404 | STAINLESS STEEL NUTS D6 UNI 55 |
| 260414 | SELF-LOCKING NUT M5 |
| 260418 | SELF-LOCKING NUT M4 |
| 260503 | STAINL.STEEL FLAT WASHER D5 UN |
| 260512 | ST/ST GROWER WASHER D6 |
| 260712 | SCREW 2,9X9,5 |
| 260713 | SCREW 3,9X16 |
| 260714 | SCREW 4,2X19 |
| 261013 | SCREW |
| 261015 | SCREW 3,9X13 |
| 322335 | COVER BHC |
| 322644 | RACK GUIDE BHC |
| 323007 | DOOR BHC30 |
| 330235 | ROD FOR BHC DOOR |
| 342087 | PIN |
| 342701 | PIN FOR TIE ROD |
| 351408 | LATERAL PANEL |
| 351409 | LATERAL PANEL |
| 351715 | FRONT PANEL |
| 351912 | BACK PANEL BHC30 |
| 390175 | PANEL |
| 411010 | DOOR MAGNET |
| 450234 | SPRING |
| 450821 | SPRING CLIP FASTENER SNU 3634 |
| 450829 | DOOR BRACKET BHC |
| 450831 | SCREW SUPPORT |
| 463143 | NAME PLATE |
| 463144 | NAME PLATE |

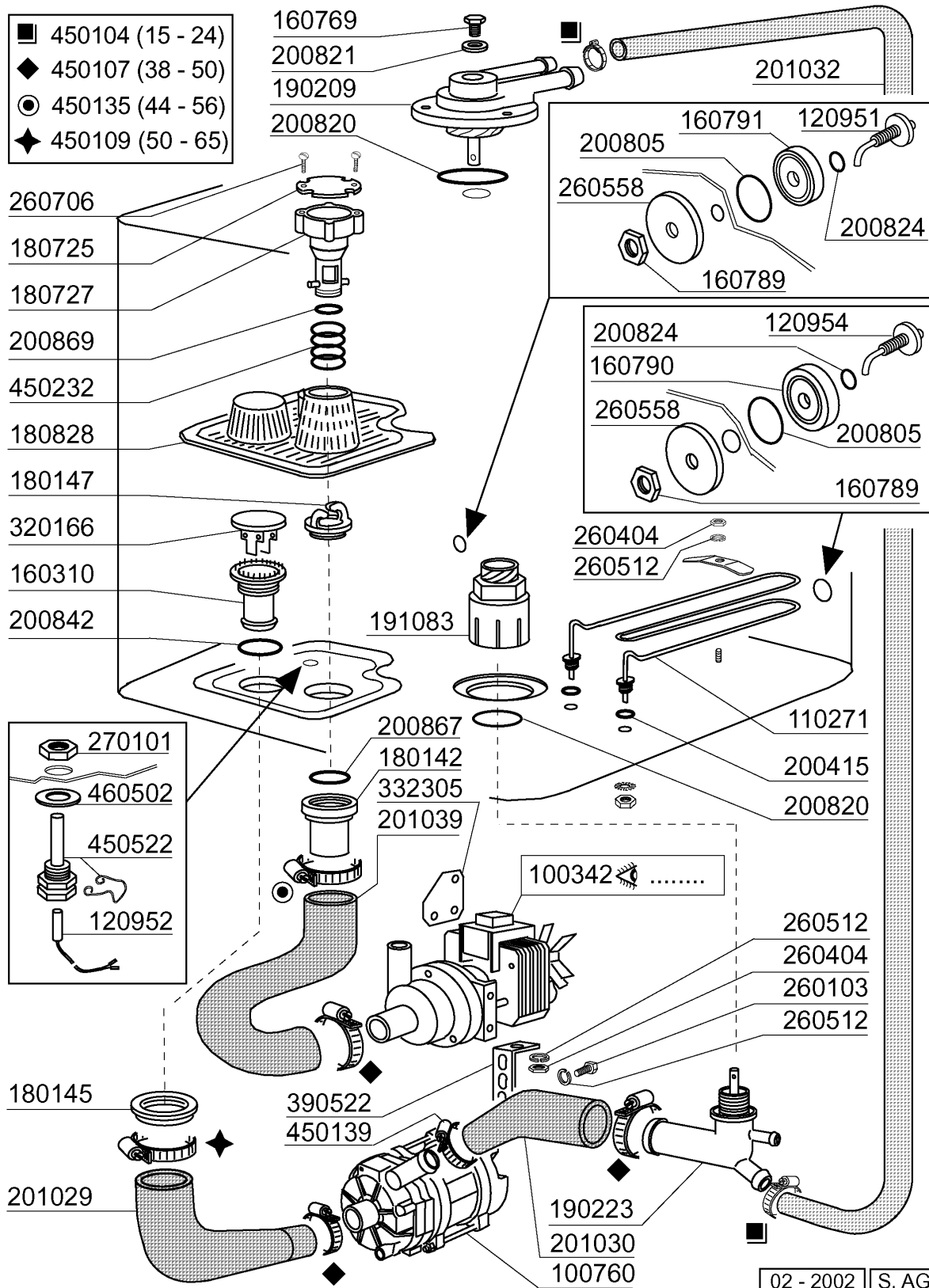
sino alla matricola - jusqu'à la matr. - up to serial no. - bis Seriennr. - hasta la matr. 9400/08/01



3 - Hood

| CODE | DESCRIPTION |
|--------|--------------------------------|
| 150838 | CABLE HOLDER FOR BHC |
| 160542 | SCREW SUPPORT |
| 160720 | PLUG HEYCO D.8 |
| 160784 | PLUG |
| 160787 | NUT |
| 160838 | SLIDING WASHER TIE ROD FC |
| 160905 | SLIDING PLATE F. TIE ROD |
| 180506 | DOOR CATCH BR-BC-FC |
| 190619 | DOOR CATCH B-F-R |
| 190657 | RACK STOP BHC |
| 200433 | SPONGY RUBBER RECT. 6X2,5 ADHE |
| 200868 | GASKET |
| 200943 | GASKET |
| 200945 | DOOR GASKET BHC |
| 210207 | FOOT BHC |
| 260104 | STAINL.ST TE-SCREW A2 6X16 UNI |
| 260138 | SCREW TE 4X10 |
| 260139 | SCREW TE 5X16 |
| 260238 | M4 X 10 MUSH/HD SCREW |
| 260323 | SCREW TSP 5X20 |
| 260326 | SCREW TS 5X10 |
| 260404 | STAINLESS STEEL NUTS D6 UNI 55 |
| 260414 | SELF-LOCKING NUT M5 |
| 260418 | SELF-LOCKING NUT M4 |
| 260503 | STAINL.STEEL FLAT WASHER D5 UN |
| 260512 | ST/ST GROWER WASHER D6 |
| 260712 | SCREW 2,9X9,5 |
| 260713 | SCREW 3,9X16 |
| 260714 | SCREW 4,2X19 |
| 261013 | SCREW |
| 261015 | SCREW 3,9X13 |
| 322335 | COVER BHC |
| 322644 | RACK GUIDE BHC |
| 323007 | DOOR BHC30 |
| 330235 | ROD FOR BHC DOOR |
| 342087 | PIN |
| 342701 | PIN FOR TIE ROD |
| 351379 | LEFT PANEL |
| 351380 | RIGHT PANEL |
| 351702 | FRONT PANEL |
| 351912 | BACK PANEL BHC30 |
| 390175 | PANEL |
| 411010 | DOOR MAGNET |
| 450234 | SPRING |
| 450821 | SPRING CLIP FASTENER SNU 3634 |
| 450829 | DOOR BRACKET BHC |
| 450831 | SCREW SUPPORT |
| 463143 | NAME PLATE |
| 463144 | NAME PLATE |

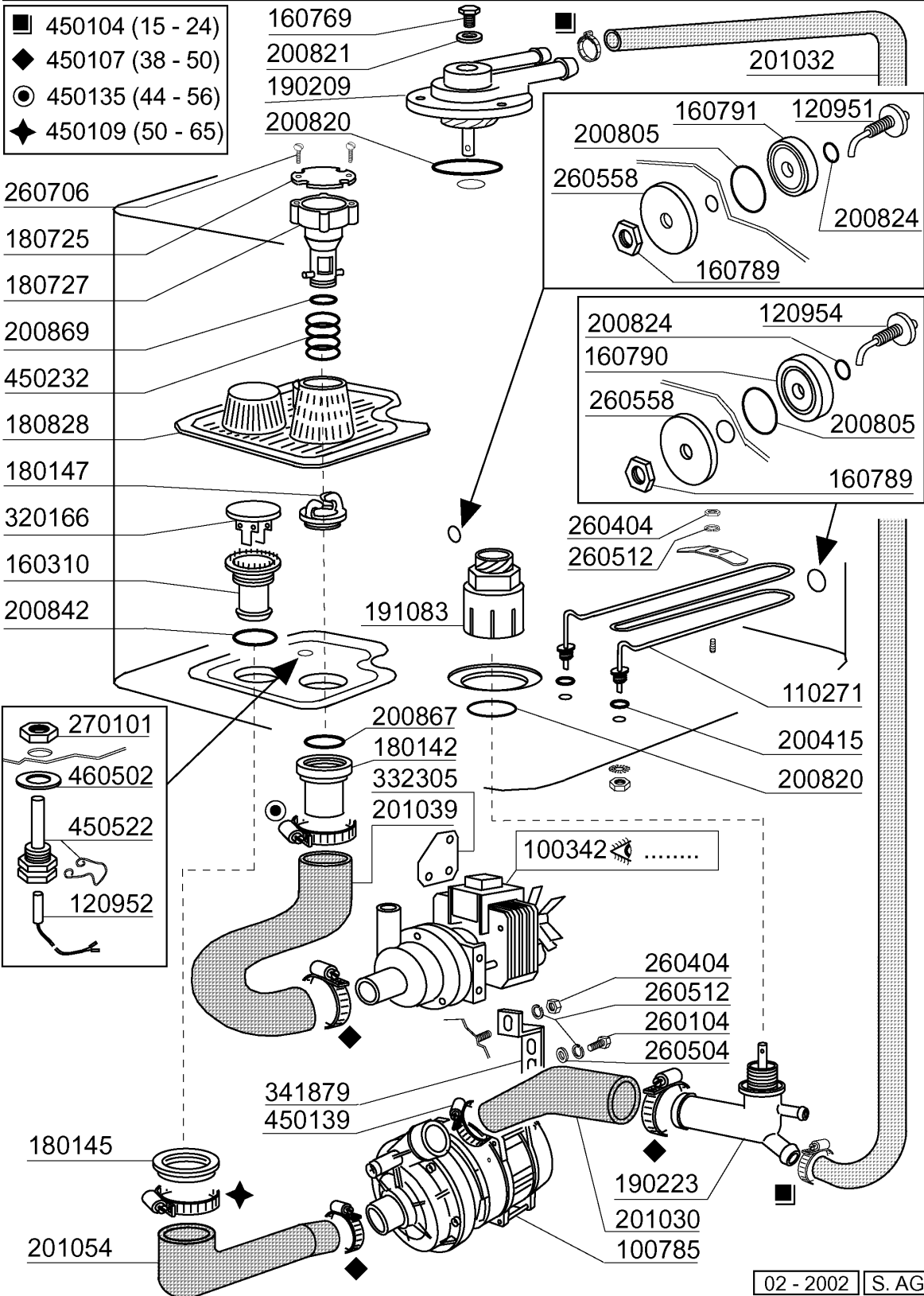
sino alla matricola - jusqu'à la matr. - up to serial no. - bis Seriennr. - hasta la matr. 9400/08/01



4 - Tank

| CODE | DESCRIPTION |
|--------|--------------------------------|
| 100342 | DRAIN PUMP 100 W 220V |
| 100760 | PUMP HP 0,3 220/240 BHC |
| 110271 | TANK HEATER 500W |
| 120951 | TOUCH PAD FOR TANK LEVEL |
| 120952 | PAD FOR TEMPERATURE |
| 120954 | PROBE FOR BHC |
| 160310 | INLET HOSE BHC |
| 160769 | PLUG F.UPPER WASH ARM SUPPORT |
| 160789 | NUT |
| 160790 | PLUG |
| 160791 | PLUG FOR TOUCH PAD |
| 180142 | CONNECTOR FOR DRAIN PUMP |
| 180145 | NUT |
| 180147 | NUT |
| 180725 | OVERFLOW PIPE COVER |
| 180727 | OVERFLOW PIPE BHC WITH DRAIN P |
| 180828 | TANK STRAINER BHC-HR |
| 190209 | UPPER WASH/RINSE ARM SUPPORT " |
| 190223 | LOWER WASH/RINSE ARM SUPPORT B |
| 191083 | LOWER WASH ARM SUPPORT |
| 200415 | AIR TRAP GASKET -F2 18,5X10X3 |
| 200805 | OR GASKET 2,62X28,24X33,48 |
| 200820 | O-RING151 46,99X5,33X57,6 |
| 200821 | O-RING 2,62X20,63 |
| 200824 | O-RING 1,78X12,42X15,98 |
| 200842 | SEAL RING OR158 PB701 NITRILE |
| 200867 | GASKET |
| 200869 | GASKET |
| 201029 | TANK INLET HOSE |
| 201030 | OUTLET HOSE |
| 201032 | OUTLET HOSE |
| 201039 | INLET HOSE |
| 260103 | SCREW TE 6X12 |
| 260404 | STAINLESS STEEL NUTS D6 UNI 55 |
| 260512 | ST/ST GROWER WASHER D6 |
| 260558 | WASHER |
| 260706 | SCREW 3,9X13 S/S |
| 270101 | HEXAGON LOCK NUT 1/2" |
| 320166 | VORTEX BREAKER FOR FC MACHINES |
| 332305 | DRAIN PUMP BRACKET BHC |
| 390522 | BRACKET FOR PUMP HP0,12 |
| 450104 | CLAMP FE ZN H=12,5 15-24 |
| 450107 | CLAMP FE ZN 38-50 H=12,2 |
| 450109 | CLAMP 50-65 |
| 450135 | CLAMP FE ZN. 44-56 H=12,2 |
| 450139 | CLAMP 26-38 H=9 |
| 450232 | SPRING |
| 450522 | S/STEEL SHIELD |
| 460502 | GASKET 30X21X2 |

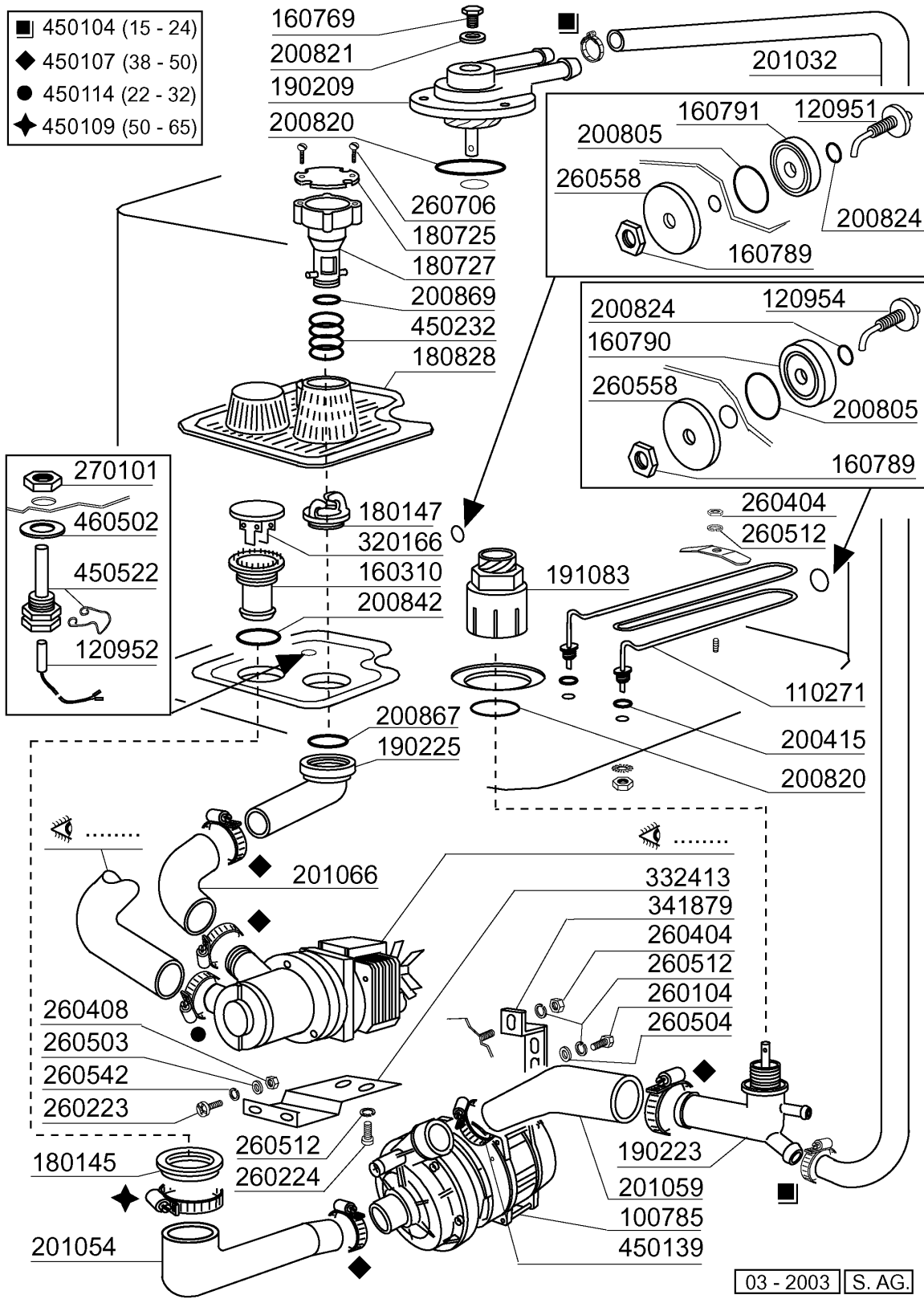
sino alla matricola - jusqu'à la matr. - up to serial no. - bis Seriennr. - hasta la matr. 9401/09/01



5 - Tank

| CODE | DESCRIPTION |
|--------|--------------------------------|
| 100342 | DRAIN PUMP 100 W 220V |
| 100785 | PUMP LGB ZF140 0.5HP |
| 110271 | TANK HEATER 500W |
| 120951 | TOUCH PAD FOR TANK LEVEL |
| 120952 | PAD FOR TEMPERATURE |
| 120954 | PROBE FOR BHC |
| 160310 | INLET HOSE BHC |
| 160769 | PLUG F.UPPER WASH ARM SUPPORT |
| 160789 | NUT |
| 160790 | PLUG |
| 160791 | PLUG FOR TOUCH PAD |
| 180142 | CONNECTOR FOR DRAIN PUMP |
| 180145 | NUT |
| 180147 | NUT |
| 180725 | OVERFLOW PIPE COVER |
| 180727 | OVERFLOW PIPE BHC WITH DRAIN P |
| 180828 | TANK STRAINER BHC-HR |
| 190209 | UPPER WASH/RINSE ARM SUPPORT " |
| 190223 | LOWER WASH/RINSE ARM SUPPORT B |
| 191083 | LOWER WASH ARM SUPPORT |
| 200415 | AIR TRAP GASKET -F2 18,5X10X3 |
| 200805 | OR GASKET 2,62X28,24X33,48 |
| 200820 | O-RING151 46,99X5,33X57,6 |
| 200821 | O-RING 2,62X20,63 |
| 200824 | O-RING 1,78X12,42X15,98 |
| 200842 | SEAL RING OR158 PB701 NITRILE |
| 200867 | GASKET |
| 200869 | GASKET |
| 201030 | OUTLET HOSE |
| 201032 | OUTLET HOSE |
| 201039 | INLET HOSE |
| 201054 | TANK INLET HOSE |
| 260104 | STAINL.ST TE-SCREW A2 6X16 UNI |
| 260404 | STAINLESS STEEL NUTS D6 UNI 55 |
| 260504 | ST/ST FLAT WASHER D6 |
| 260512 | ST/ST GROWER WASHER D6 |
| 260558 | WASHER |
| 260706 | SCREW 3,9X13 S/S |
| 270101 | HEXAGON LOCK NUT 1/2" |
| 320166 | VORTEX BREAKER FOR FC MACHINES |
| 332305 | DRAIN PUMP BRACKET BHC |
| 341879 | BRACKET FOR PUMP |
| 450104 | CLAMP FE ZN H=12,5 15-24 |
| 450107 | CLAMP FE ZN 38-50 H=12,2 |
| 450109 | CLAMP 50-65 |
| 450135 | CLAMP FE ZN. 44-56 H=12,2 |
| 450139 | CLAMP 26-38 H=9 |
| 450232 | SPRING |
| 450522 | S/STEEL SHIELD |
| 460502 | GASKET 30X21X2 |

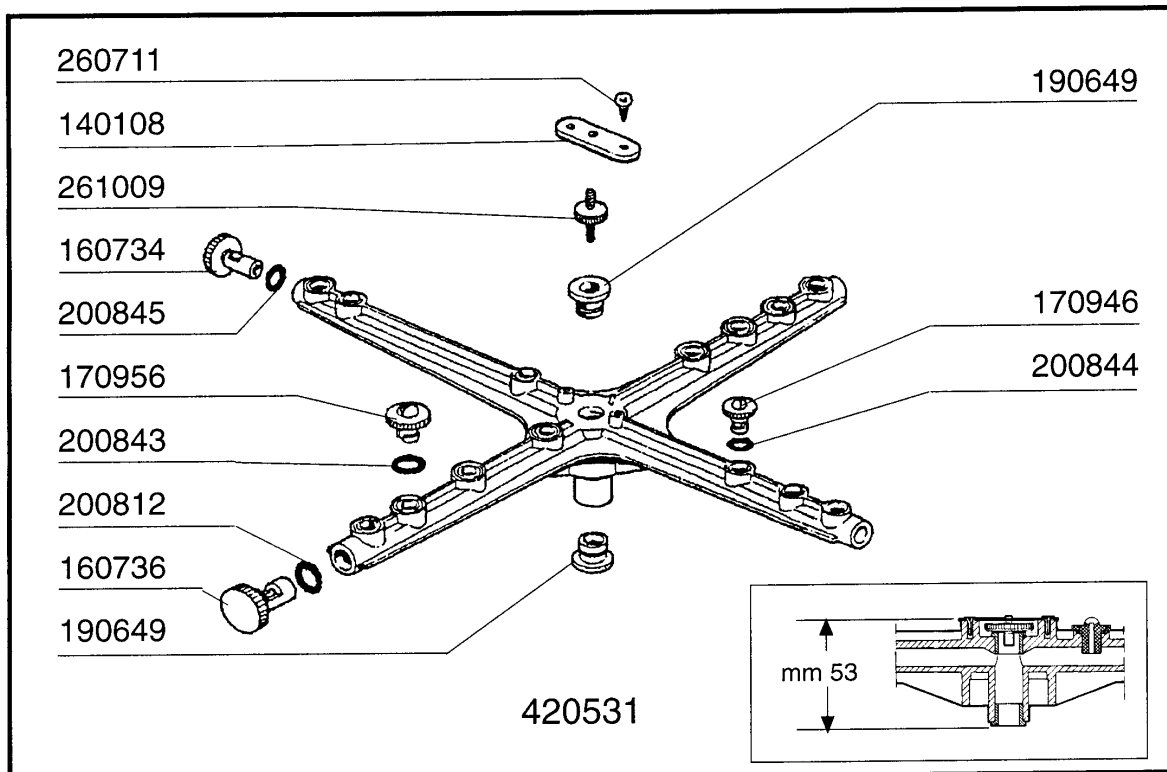
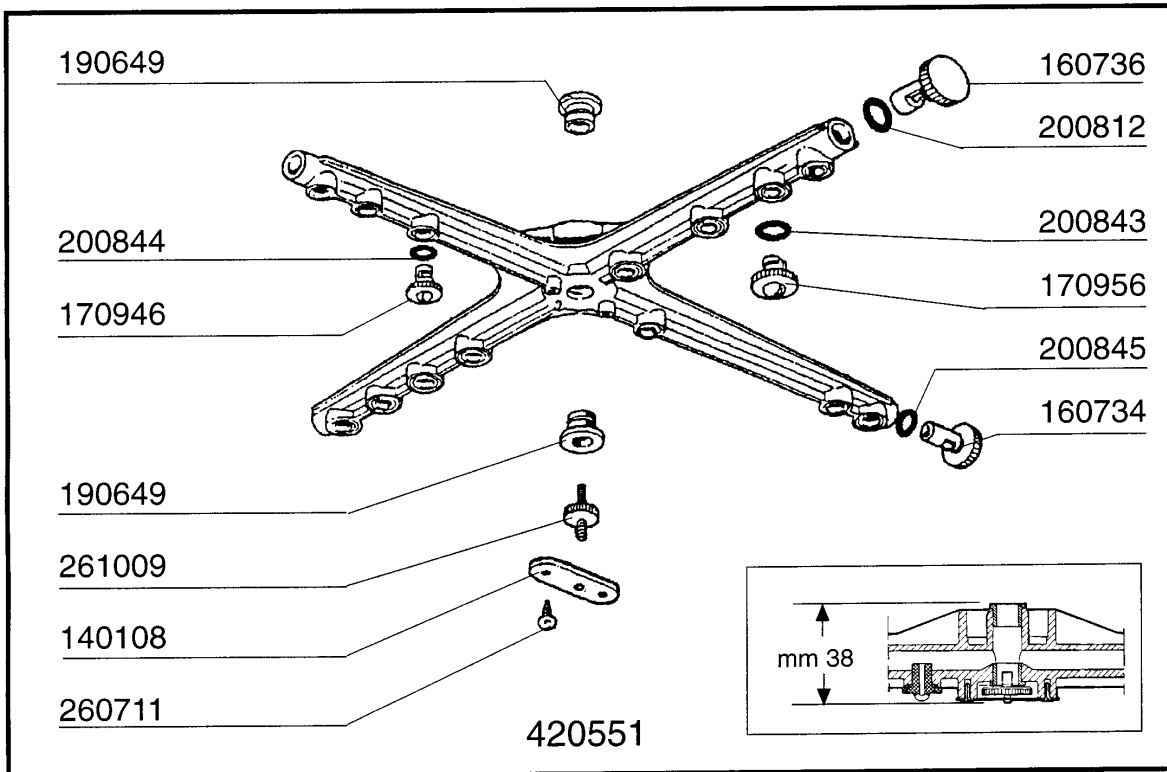
dalla matricola - a partir de la matr. - from serial no. - ab Seriennr. - despues la matr. 160/01/03



03 - 2003 | S. AG.

6 - Tank

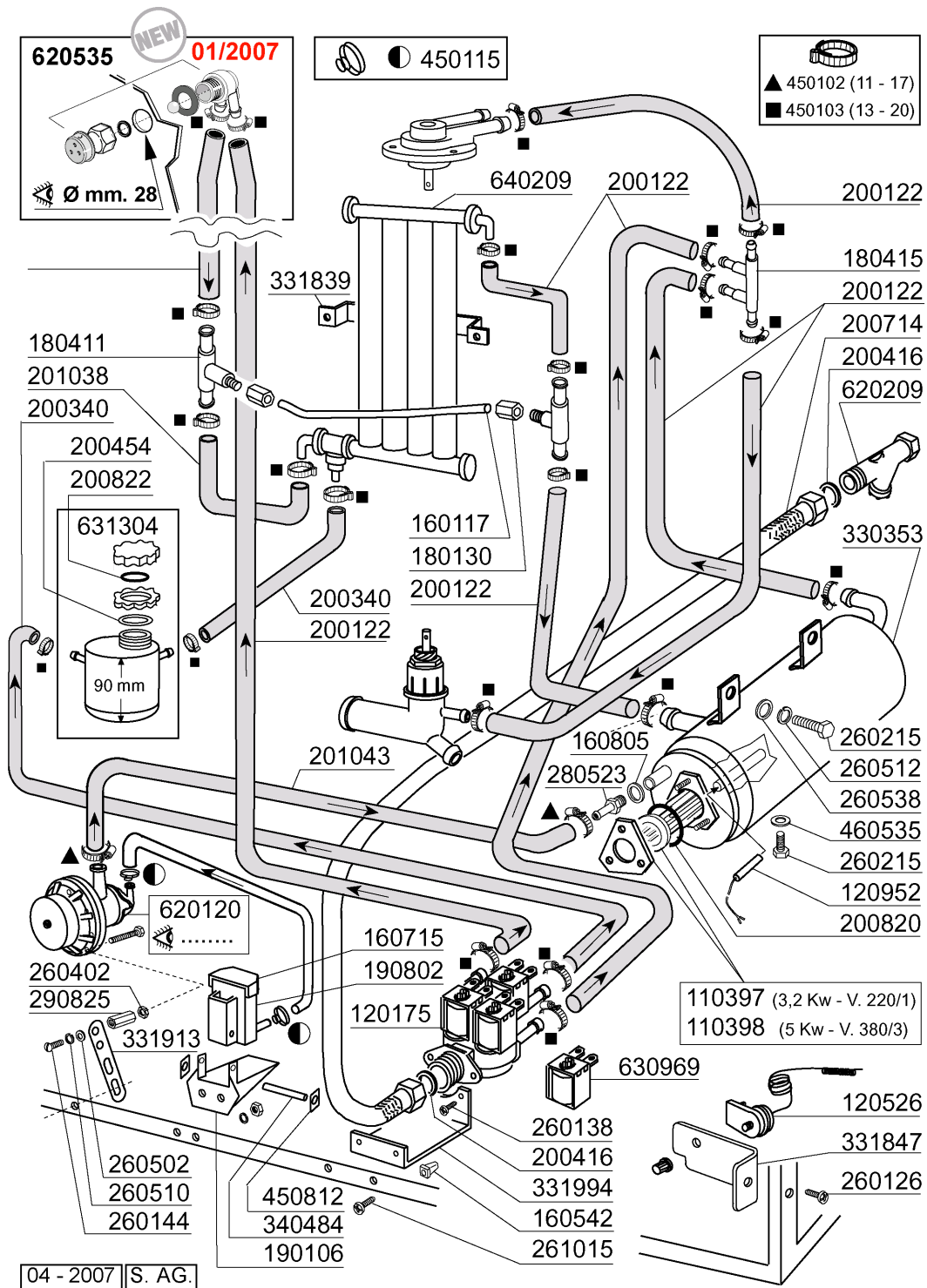
| CODE | DESCRIPTION |
|--------|--------------------------------|
| 100785 | PUMP LGB ZF140 0.5HP |
| 110271 | TANK HEATER 500W |
| 120951 | TOUCH PAD FOR TANK LEVEL |
| 120952 | PAD FOR TEMPERATURE |
| 120954 | PROBE FOR BHC |
| 160310 | INLET HOSE BHC |
| 160769 | PLUG F.UPPER WASH ARM SUPPORT |
| 160789 | NUT |
| 160790 | PLUG |
| 160791 | PLUG FOR TOUCH PAD |
| 180145 | NUT |
| 180147 | NUT |
| 180725 | OVERFLOW PIPE COVER |
| 180727 | OVERFLOW PIPE BHC WITH DRAIN P |
| 180828 | TANK STRAINER BHC-HR |
| 190209 | UPPER WASH/RINSE ARM SUPPORT " |
| 190223 | LOWER WASH/RINSE ARM SUPPORT B |
| 190225 | DRAIN OUTLET |
| 191083 | LOWER WASH ARM SUPPORT |
| 200415 | AIR TRAP GASKET -F2 18,5X10X3 |
| 200805 | OR GASKET 2,62X28,24X33,48 |
| 200820 | O-RING151 46,99X5,33X57,6 |
| 200821 | O-RING 2,62X20,63 |
| 200824 | O-RING 1,78X12,42X15,98 |
| 200842 | SEAL RING OR158 PB701 NITRILE |
| 200867 | GASKET |
| 200869 | GASKET |
| 201032 | OUTLET HOSE |
| 201054 | TANK INLET HOSE |
| 201059 | OUTLET HOSE |
| 201066 | INLET HOSE LB DRAIN PUMP |
| 260104 | STAINL.ST TE-SCREW A2 6X16 UNI |
| 260223 | M5X12 MSH/HD SCREW SPECIAL S/S |
| 260224 | TB-SCREW 6X15 B23-10-11-12 |
| 260404 | STAINLESS STEEL NUTS D6 UNI 55 |
| 260408 | S/S NUTS D.12 |
| 260503 | STAINL.STEEL FLAT WASHER D5 UN |
| 260504 | ST/ST FLAT WASHER D6 |
| 260512 | ST/ST GROWER WASHER D6 |
| 260542 | WASHER D.5 |
| 260558 | WASHER |
| 260706 | SCREW 3,9X13 S/S |
| 270101 | HEXAGON LOCK NUT 1/2" |
| 320166 | VORTEX BREAKER FOR FC MACHINES |
| 332413 | PUMP BRACKET |
| 341879 | BRACKET FOR PUMP |
| 450104 | CLAMP FE ZN H=12,5 15-24 |
| 450107 | CLAMP FE ZN 38-50 H=12,2 |
| 450109 | CLAMP 50-65 |
| 450114 | CLAMP FE ZN.22-32 H=12,2 |
| 450139 | CLAMP 26-38 H=9 |
| 450232 | SPRING |
| 450522 | S/STEEL SHIELD |
| 460502 | GASKET 30X21X2 |



7 - Wash arm

| CODE | DESCRIPTION |
|-------------|--------------------------------|
| 140108 | PLATE FOR WASH ARM |
| 160734 | END PLUGS RINSE ARM |
| 160736 | WASH ARM PLUG F45 |
| 170946 | RINSE JET/RINSE ARM B-F |
| 170956 | WASH JET/WASH ARM B-F20 |
| 190649 | BUSH WASH ARM GLASSWASHERS |
| 200812 | O-RING 1,78X17,17X20,73 |
| 200843 | O RING 2X13X17 |
| 200844 | O RING 2X9,5X13,5 |
| 200845 | O RING 109 2,62X9,13X14,37 |
| 260711 | SCREW 4,2X13 A2 DIN7972 |
| 261009 | RETAIN.SCREW FOR WASH-RINSE AR |
| 420531 | PLASTIC WASH-RINSE ARM F20-B |
| 420551 | UPPER WASH ARM GLASSWASHERS |

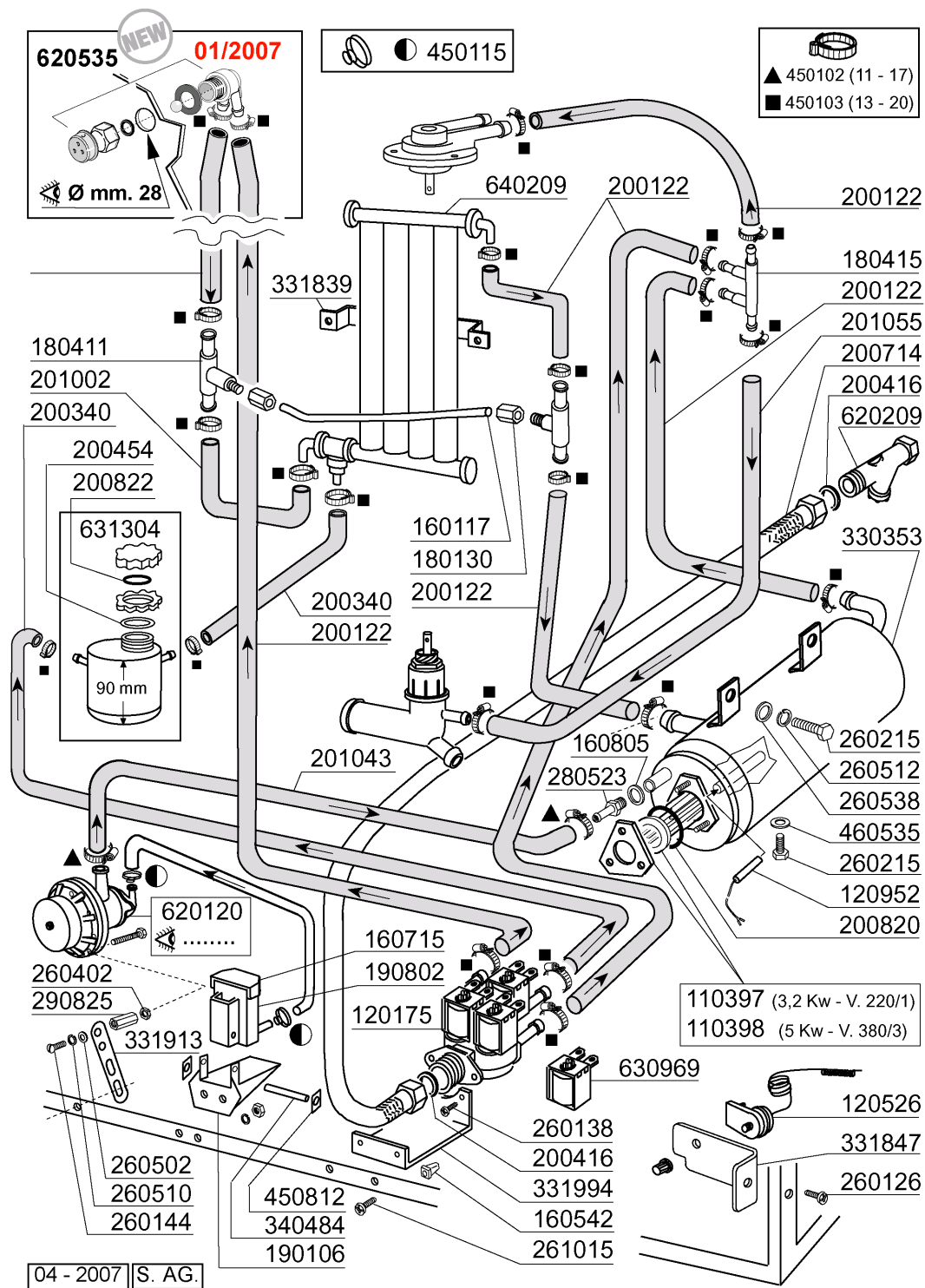
8 - Rinse Assembly/Water softener



8 - Rinse Assembly/Water softener

| CODE | DESCRIPTION |
|--------|--------------------------------|
| 110397 | HEATER 3200W 230V/1 |
| 110398 | HEATER 5000W 230V/3 |
| 120175 | SOLENOID VALVE 3 WAYS 180Ø |
| 120526 | SAFETY THERMOSTAT 2POLES |
| 120952 | PAD FOR TEMPERATURE |
| 160117 | HOSE 6,3X1,1 WITHE |
| 160542 | SCREW SUPPORT |
| 160715 | COVER FOR RINSE AID CONTAINER |
| 160805 | GASKET D.8 |
| 180130 | CONNECTION NUT FOR BY PASS (1/ |
| 180411 | TEE-NIPPLE FOR BY PASS "BTM" |
| 180415 | TEE NIPPLE DOUBLE "T" |
| 190106 | RINSE AID CONTAINER SUPP. B23- |
| 190802 | RINSE.AID CONTAINER B20-B41S |
| 200122 | HOSE 11X19 |
| 200340 | SALT CONTAINER HOSE B25-7-12 |
| 200416 | GASKET D. 3/4" |
| 200454 | GASKET F. SALT CONT. |
| 200714 | GLASSWASHER INLET HOSE |
| 200820 | O-RING151 46,99X5,33X57,6 |
| 200822 | PLUG GASKET OF SALT CONTAINER |
| 201038 | HOSE |
| 201043 | OUTLET HOSE |
| 260126 | SCREW TE 5X12 |
| 260138 | SCREW TE 4X10 |
| 260144 | SCREW TE 4X6 |
| 260215 | SCREW TCP 6X16 |
| 260402 | STAINLESS STEEL NUT D4 UNI 55 |
| 260502 | S/S FLAT WASHER D.4 |
| 260510 | GROWER WASHER D.4 |
| 260512 | ST/ST GROWER WASHER D6 |
| 260538 | WASHER 18X6X1,5 ST/ST |
| 261015 | SCREW 3,9X13 |
| 280523 | NIPPLE |
| 290825 | SPACER |
| 330353 | BOILER BHC |
| 331839 | BRACKET FOR WATER SOFTENER |
| 331847 | BRACKET WASH COLUMN LVP |
| 331913 | BRACKET |
| 331994 | BRACKET FOR SOLENOID VALVE BHC |
| 340484 | SHAFT F. RINSE AID CONTAINER |
| 450102 | CLAMP FE ZN 11-17 H=9 |
| 450103 | CLAMP FE ZN. 13-20 H=9 |
| 450115 | ELASTIC CLAMP D.8,3/7,8 |
| 450812 | SPRING FOR SPINDLE (CODE NO.34 |
| 460535 | GASKET FOR BOILER PLUG BHC |
| 620120 | RINSE AID INJECTOR |
| 620209 | INLET WATER FILTER |
| 620535 | VACUUM BREAKER |
| 630969 | COIL S4216 220/50HZ |
| 631304 | SALT CONTAINER |
| 640209 | WATER SOFTENER (4 COLUMNS) |

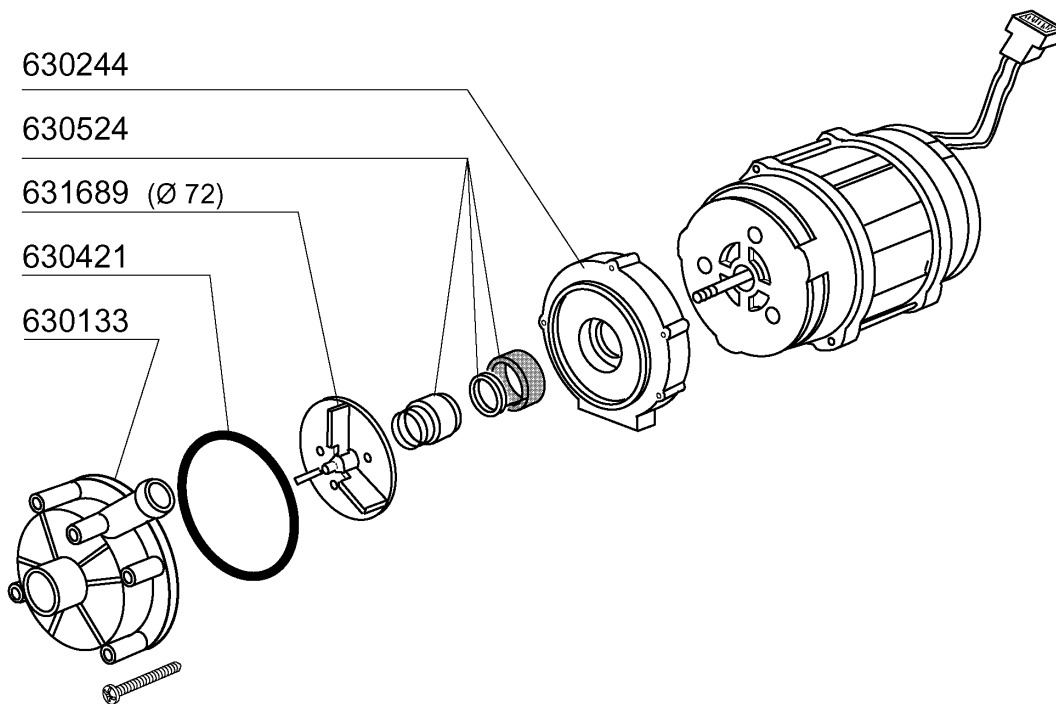
9 - Rinse Assembly/Water softener



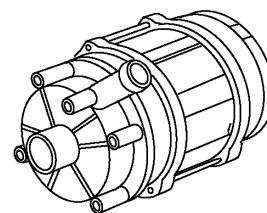
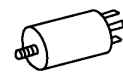
9 - Rinse Assembly/Water softener

| CODE | DESCRIPTION |
|--------|--------------------------------|
| 110397 | HEATER 3200W 230V/1 |
| 110398 | HEATER 5000W 230V/3 |
| 120175 | SOLENOID VALVE 3 WAYS 180Ø |
| 120526 | SAFETY THERMOSTAT 2POLES |
| 120952 | PAD FOR TEMPERATURE |
| 160117 | HOSE 6,3X1,1 WITHE |
| 160542 | SCREW SUPPORT |
| 160715 | COVER FOR RINSE AID CONTAINER |
| 160805 | GASKET D.8 |
| 180130 | CONNECTION NUT FOR BY PASS (1/ |
| 180411 | TEE-NIPPLE FOR BY PASS "BTM" |
| 180415 | TEE NIPPLE DOUBLE "T" |
| 190106 | RINSE AID CONTAINER SUPP. B23- |
| 190802 | RINSE.AID CONTAINER B20-B41S |
| 200122 | HOSE 11X19 |
| 200340 | SALT CONTAINER HOSE B25-7-12 |
| 200416 | GASKET D. 3/4" |
| 200454 | GASKET F. SALT CONT. |
| 200714 | GLASSWASHER INLET HOSE |
| 200820 | O-RING151 46,99X5,33X57,6 |
| 200822 | PLUG GASKET OF SALT CONTAINER |
| 201002 | HOSE |
| 201043 | OUTLET HOSE |
| 201055 | HOSE |
| 260126 | SCREW TE 5X12 |
| 260138 | SCREW TE 4X10 |
| 260144 | SCREW TE 4X6 |
| 260215 | SCREW TCP 6X16 |
| 260402 | STAINLESS STEEL NUT D4 UNI 55 |
| 260502 | S/S FLAT WASHER D.4 |
| 260510 | GROWER WASHER D.4 |
| 260512 | ST/ST GROWER WASHER D6 |
| 260538 | WASHER 18X6X1,5 ST/ST |
| 261015 | SCREW 3,9X13 |
| 280523 | NIPPLE |
| 290825 | SPACER |
| 330353 | BOILER BHC |
| 331839 | BRACKET FOR WATER SOFTENER |
| 331847 | BRACKET WASH COLUMN LVP |
| 331913 | BRACKET |
| 331994 | BRACKET FOR SOLENOID VALVE BHC |
| 340484 | SHAFT F. RINSE AID CONTAINER |
| 450102 | CLAMP FE ZN 11-17 H=9 |
| 450103 | CLAMP FE ZN. 13-20 H=9 |
| 450115 | ELASTIC CLAMP D.8,3/7,8 |
| 450812 | SPRING FOR SPINDLE (CODE NO.34 |
| 460535 | GASKET FOR BOILER PLUG BHC |
| 620120 | RINSE AID INJECTOR |
| 620209 | INLET WATER FILTER |
| 620535 | VACUUM BREAKER |
| 630969 | COIL S4216 220/50HZ |
| 631304 | SALT CONTAINER |
| 640209 | WATER SOFTENER (4 COLUMNS) |

sino alla matricola - jusqu'à la matr. - up to serial no. - bis Seriennr. - hasta la matr. 9400/08/01



631216
(6,3 μ F)



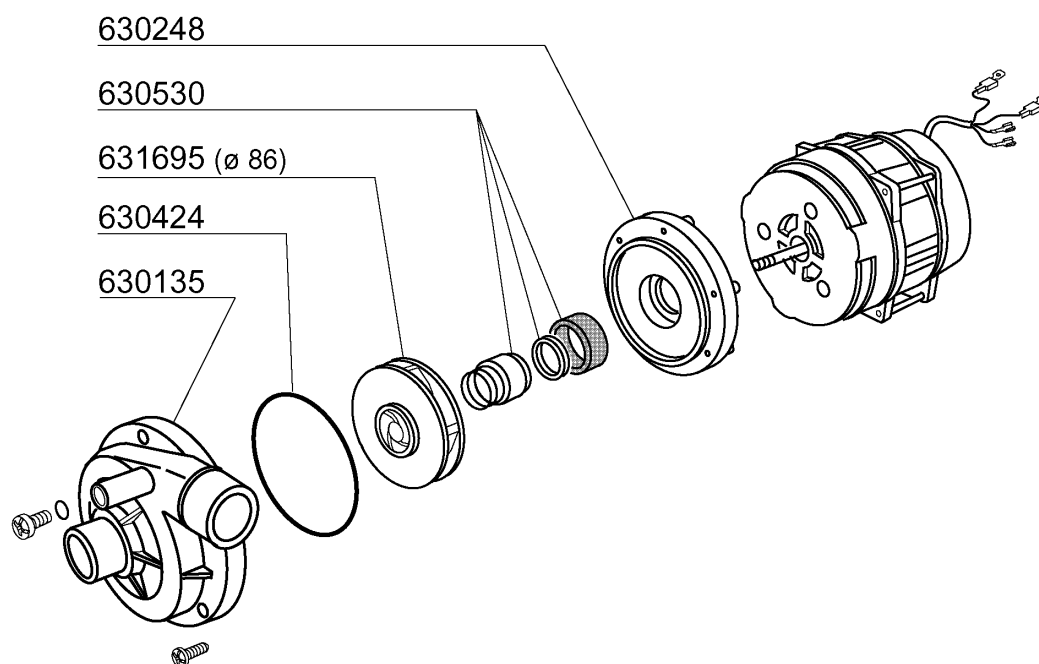
100760 230 V 50 Hz HP 0,3

09 - 2001 S. AG.

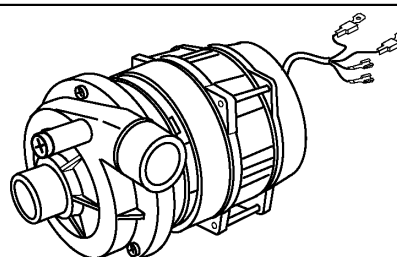
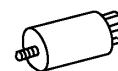
10 - Wash pump

| CODE | DESCRIPTION |
|-------------|----------------------------|
| 100760 | PUMP HP 0,3 220/240 BHC |
| 630133 | PUMP VOLUTE LGB 0,30HP |
| 630244 | PUMP COVER LGB 0,30 HP |
| 630421 | GASKET LGB 0,30 HP |
| 630524 | SEAL FOR PUMP LGB0,30 HP |
| 631216 | CAPACITOR 6.3 MF 450V |
| 631689 | PUMPE IMPELLER LGB 0,30 HP |

dalla matricola - a partir de la matr. - from serial no. - ab Seriennr. - despues la matr. 9401/09/01



631208
(5 μ F)

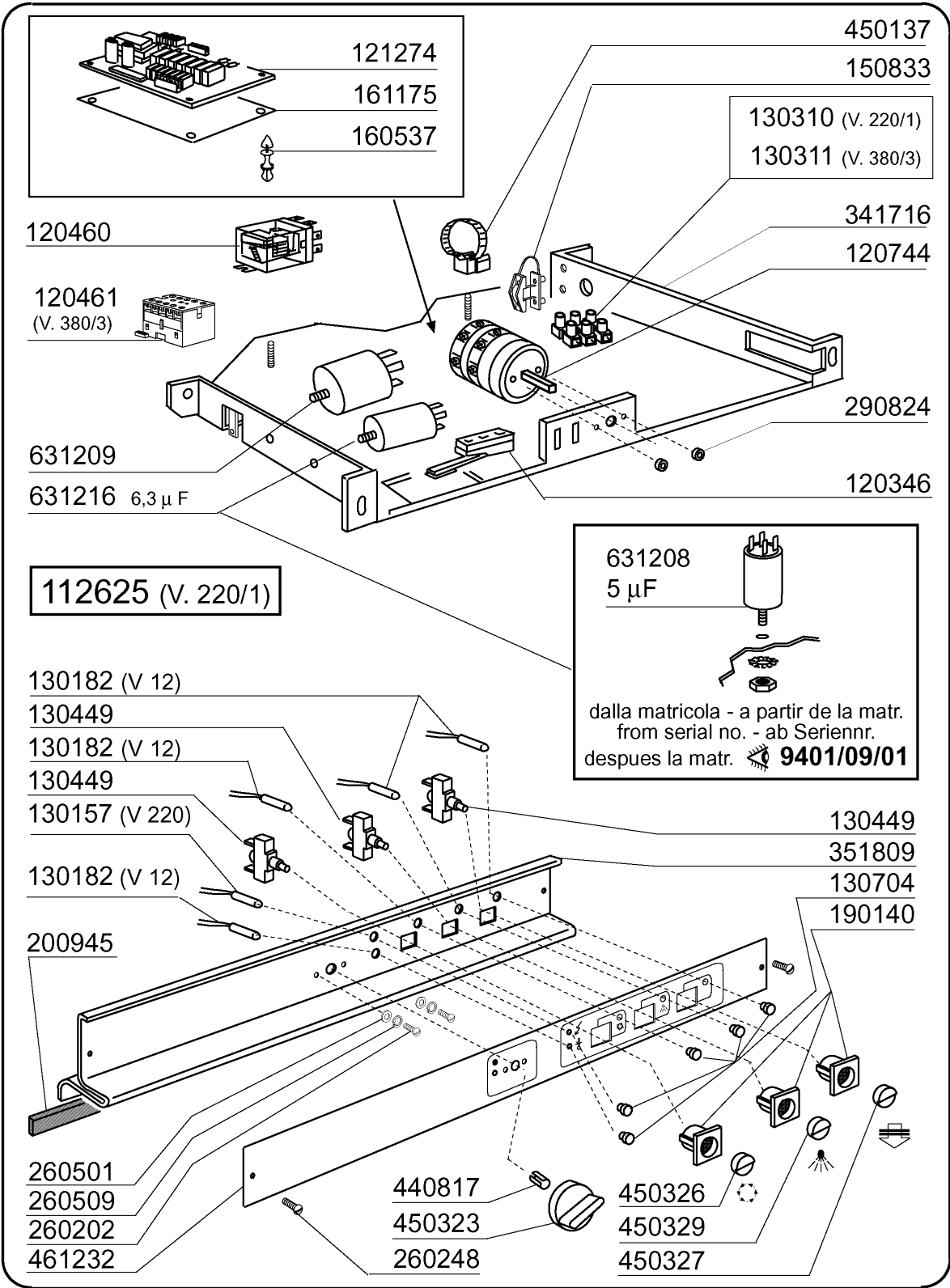


100785 230 V 50 Hz HP 0,3 Kw 0,37

09 - 2001 S. AG.

11 - Wash pump

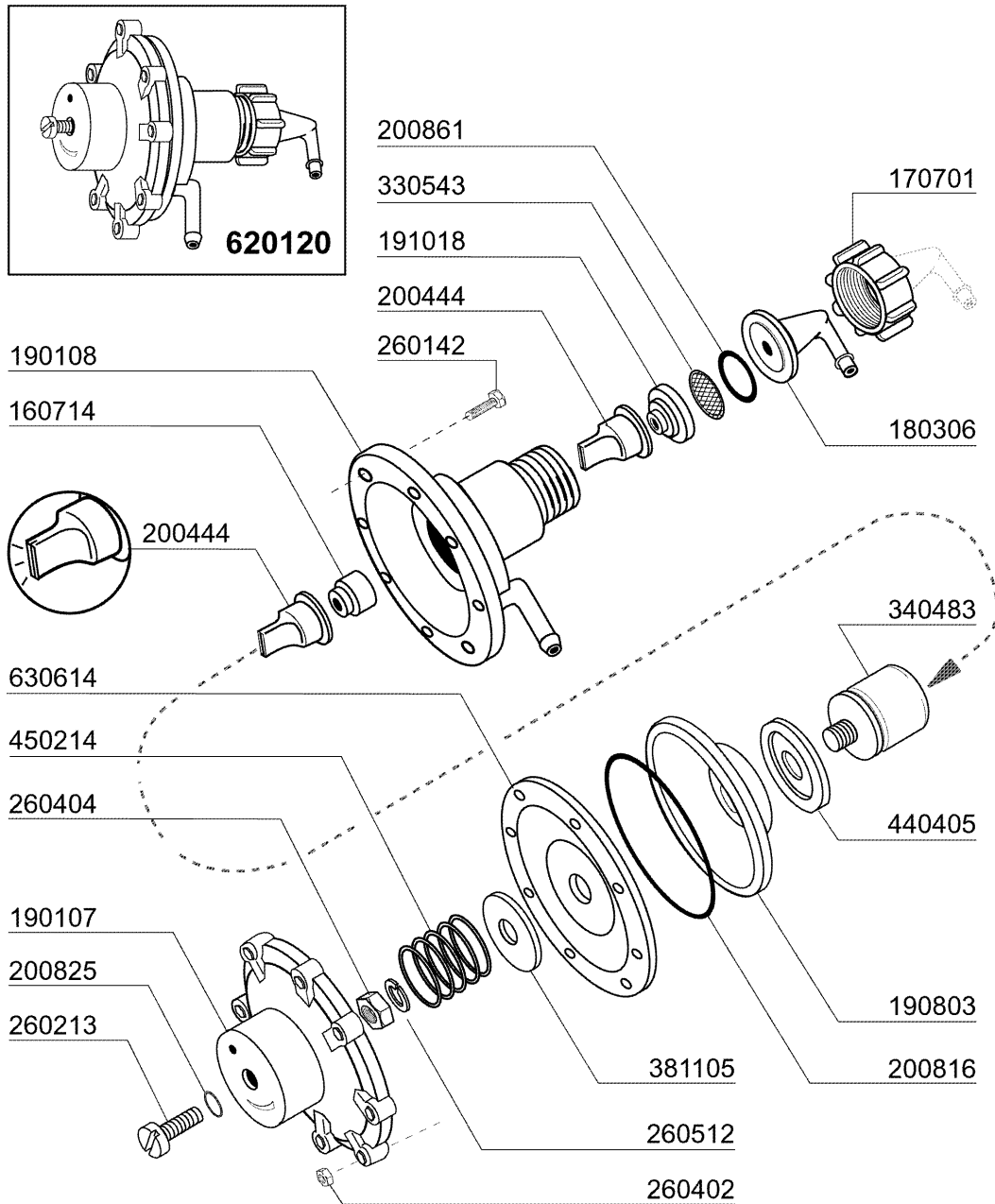
| CODE | DESCRIPTION |
|-------------|-------------------------------|
| 100785 | PUMP LGB ZF140 0.5HP |
| 630135 | PUMP VOLUTE LGB 0,30HP ZF140 |
| 630248 | PUMP COVER LGB 0,30HP ZF140 |
| 630424 | PUMP GASKET LGB 0,3HP ZF140 |
| 630530 | SEAL FOR PUMP LGB 0,3HP ZF140 |
| 631208 | CONDENSER 5MF.450V |
| 631695 | PUMP IMPELLER 0,3HP LGB |



10 - 2001 S. AG.

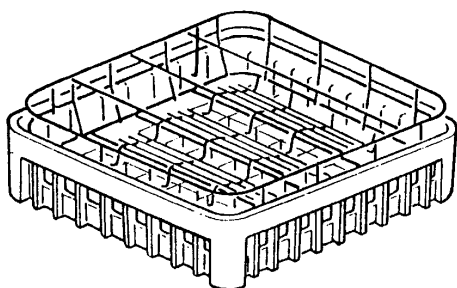
12 - Control box BHCHRA

| CODE | DESCRIPTION |
|--------|--------------------------------|
| 112625 | WIRING FOR BHC30HRA |
| 120346 | DOOR MICROSWITCH WITH MAGNET |
| 120460 | RELAY 16A 220V |
| 120461 | CONTACTOR ABB B6-30-01 220V |
| 120744 | SWITCH QUADRIPOLE.16A 380V |
| 121274 | ELECTRONIC PANEL BHC-HR |
| 130157 | GREEN LED FOR BR-BC-C-SERIES - |
| 130182 | GREEN LAMP 12V |
| 130310 | TERMINAL BLOCK 3 POSITIONS |
| 130311 | TERMINAL BLOCK |
| 130449 | PUSH BUTTON BR-BC-FC |
| 130704 | GREEN COLOUR.IND.LAMP COVER |
| 150833 | CABLE HOLDER BC/BR |
| 160537 | ELECTRONIC CARD SPACER |
| 161175 | PROTECTION |
| 190140 | BUTTON HOLDER BR-BC-FC |
| 200945 | DOOR GASKET BHC |
| 260202 | SCREW TCP 3X16 |
| 260248 | SPECIAL SCREW TB 5X12 |
| 260501 | STAINL.STEEL FLAT WASHER D3 UN |
| 260509 | GROWER WASHER D.3 |
| 290824 | DISTANCE PIECE FOR BR-BC-FC SW |
| 341716 | SUPPORT FOR ELECTR. PANEL BR-B |
| 351809 | CONTROL PANEL SUPPORT |
| 440817 | SNAP RING LSCB/1853/17/00 |
| 450137 | COLLAR CONNECTION WITH BASE 31 |
| 450323 | KNOB FOR BC-BR-C95-C155 |
| 450326 | PUSH BUTTON "CYCLE" GREEN |
| 450327 | REGENERATION SWITCH |
| 450329 | COVER FOR PUSH BUTTON COLD RIN |
| 461232 | PLATE BHC-HRA |
| 631208 | CONDENSER 5MF.450V |
| 631209 | ANTI-NOISE FILTER |
| 631216 | CAPACITOR 6.3 MF 450V |

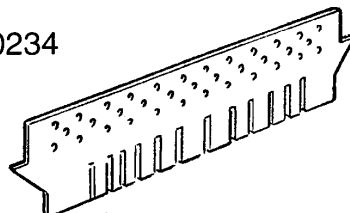


13 - Rinse aid injector

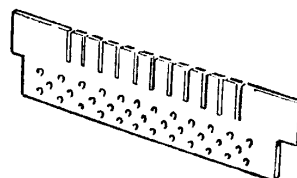
| CODE | DESCRIPTION |
|--------|--------------------------------|
| 160714 | PLUG FOR RINSE AID INJECTOR MO |
| 170701 | LOCK NUT 1/2" F.INJECTOR |
| 180306 | NIPPLE F.RINSE AID INJECTOR |
| 190107 | COVER FOR RINSE AID DISPENSER |
| 190108 | VOLUTE FOR RINSE AID DISPENSER |
| 190803 | GASKET SUPPORT RING F.INJECT |
| 191018 | FILTER SUPPORT RINSE AID INJEC |
| 200444 | SUCTION VALVE RINSE INJECTOR |
| 200816 | O-RING 2,5X59,2X64,2 RINSE INJ |
| 200825 | O-RING 3X5X11 RINSE INJECTOR |
| 200861 | O-RING 14X18X2 |
| 260142 | SCREW TE 4X16 |
| 260213 | SCREW TCP 5X25 |
| 260402 | STAINLESS STEEL NUT D4 UNI 55 |
| 260404 | STAINLESS STEEL NUTS D6 UNI 55 |
| 260512 | ST/ST GROWER WASHER D6 |
| 330543 | FILTER RINSE AID INJECTOR D.17 |
| 340483 | PISTON FOR RINSE AID DISPENSER |
| 381105 | DIAPHRAGME DISC |
| 440405 | GASKET FOR RINSE AID INJ. |
| 450214 | SPRING RINSE AID INJECTOR |
| 620120 | RINSE AID INJECTOR |
| 630614 | DIAPHRAGM RINSE INJECTOR |



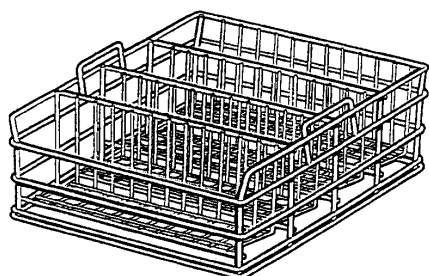
660714



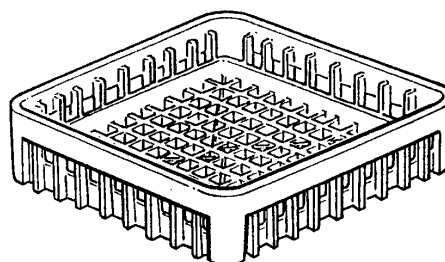
660234



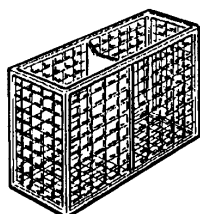
660235



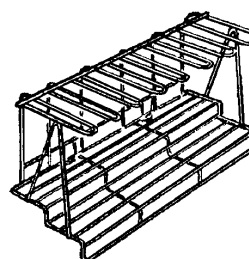
520131



660712



660519

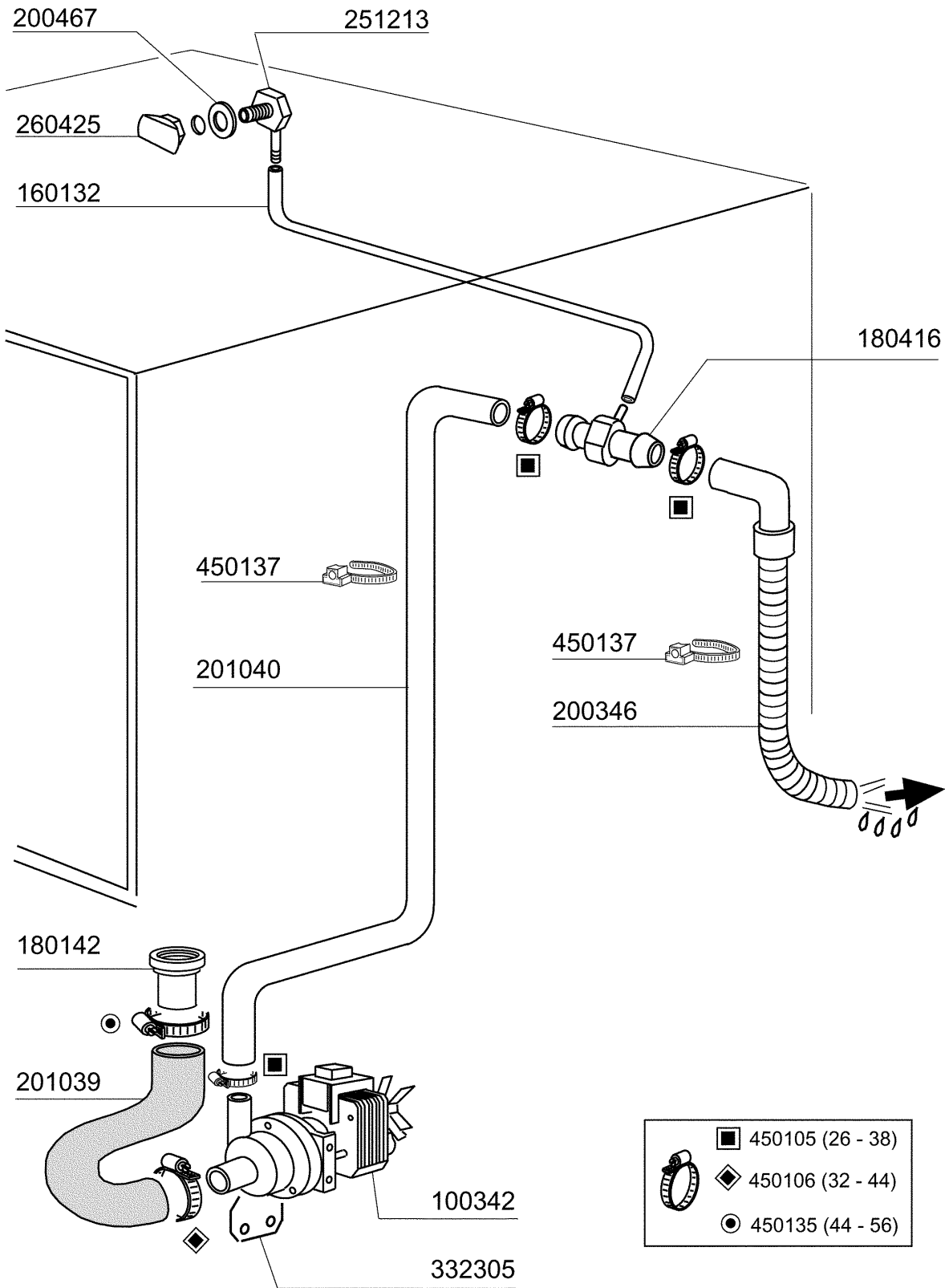


520611

14 - Rack

| CODE | DESCRIPTION |
|-------------|--------------------------------|
| 520131 | GLASS RACK 40X40 H270 |
| 520611 | INSERT FOR CHAMPAGNE GLASSES |
| 660234 | UPPER INSERT FOR 16-25-36 GLAS |
| 660235 | LOWER INSERT FOR 16-25-36 GLAS |
| 660519 | 2-PLACES CUTLERY HOLDER |
| 660712 | BASE RACK 400X400 |
| 660714 | GLASS RACK (400X400) |

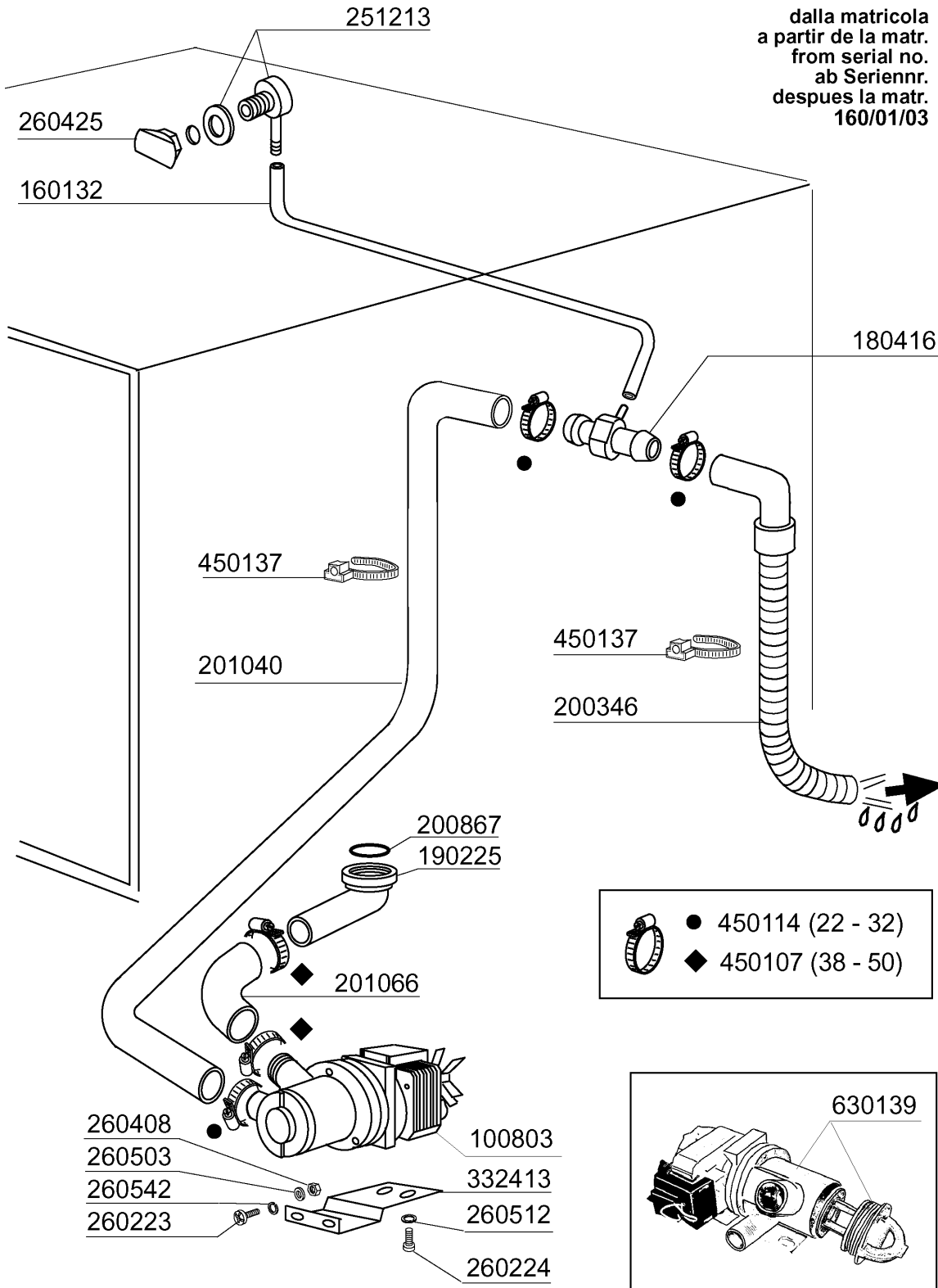
15 - Drain pump



10 - 2000 | S. AG.

15 - Drain pump

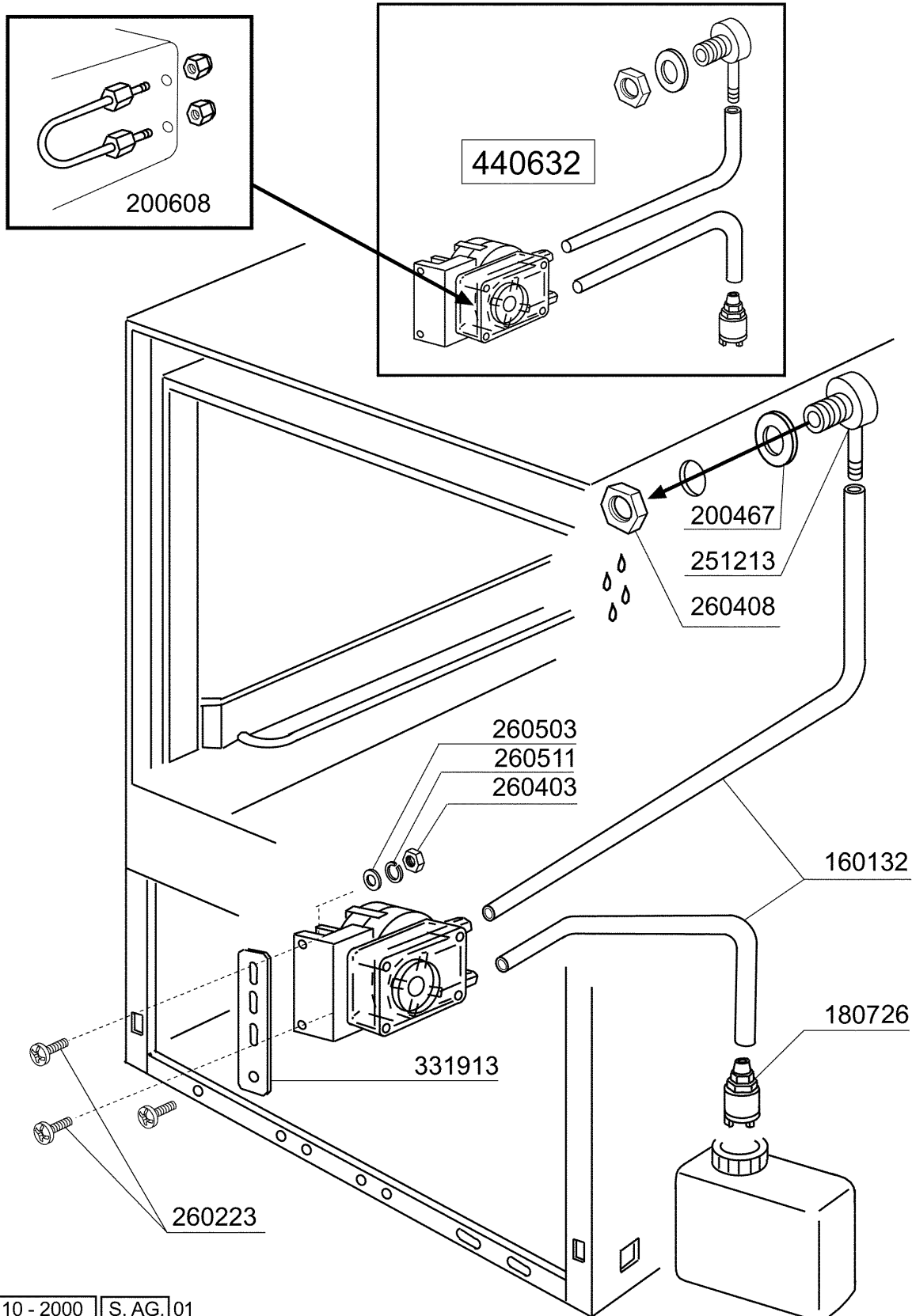
| CODE | DESCRIPTION |
|-------------|--------------------------------|
| 100342 | DRAIN PUMP 100 W 220V |
| 160132 | HOSE 5X7 |
| 180142 | CONNECTOR FOR DRAIN PUMP |
| 180416 | TEE FOR DRAIN PUMP "HR" |
| 200346 | DRAIN HOSE GLASSWASHER |
| 200467 | DUTRAL GASKET F. AIR TRAP |
| 201039 | INLET HOSE |
| 201040 | DRAIN PUMP OUTLET HOSE BHC |
| 251213 | INJECTIOR S/S FOR DETERGENT IN |
| 260425 | LEAKING NUT FOR DRAIN PUMP HR |
| 332305 | DRAIN PUMP BRACKET BHC |
| 450105 | CLAMP FE ZN. 26-38 H=12,2 |
| 450106 | CLAMP FE ZN 32-44 H=12,2 |
| 450135 | CLAMP FE ZN. 44-56 H=12,2 |
| 450137 | COLLAR CONNECTION WITH BASE 31 |



dalla matricola
a partir de la matr.
from serial no.
ab Seriennr.
despues la matr.
160/01/03

16 - Drain pump

| CODE | DESCRIPTION |
|--------|--------------------------------|
| 100803 | DRAIN PUMP WITH FILTER 220/50 |
| 160132 | HOSE 5X7 |
| 180416 | TEE FOR DRAIN PUMP "HR" |
| 190225 | DRAIN OUTLET |
| 200346 | DRAIN HOSE GLASSWASHER |
| 200867 | GASKET |
| 201040 | DRAIN PUMP OUTLET HOSE BHC |
| 201066 | INLET HOSE LB DRAIN PUMP |
| 251213 | INJECTOR S/S FOR DETERGENT IN |
| 260223 | M5X12 MSH/HD SCREW SPECIAL S/S |
| 260224 | TB-SCREW 6X15 B23-10-11-12 |
| 260408 | S/S NUTS D.12 |
| 260425 | LEAKING NUT FOR DRAIN PUMP HR |
| 260503 | STAINL.STEEL FLAT WASHER D5 UN |
| 260512 | ST/ST GROWER WASHER D6 |
| 260542 | WASHER D.5 |
| 332413 | PUMP BRACKET |
| 450107 | CLAMP FE ZN 38-50 H=12,2 |
| 450114 | CLAMP FE ZN.22-32 H=12,2 |
| 450137 | COLLAR CONNECTION WITH BASE 31 |
| 630139 | DRAIN PUMP VOLUTE WITH FILTER |



17 - Detergent dispenser

| CODE | DESCRIPTION |
|-------------|--------------------------------|
| 160132 | HOSE 5X7 |
| 180726 | STREINER FOR RINSE AID INJECTO |
| 200467 | DUTRAL GASKET F. AIR TRAP |
| 200608 | DETERGENT DISPENSER HOSE |
| 251213 | INJECTIOR S/S FOR DETERGENT IN |
| 260223 | M5X12 MSH/HD SCREW SPECIAL S/S |
| 260403 | NUTS D.5 |
| 260408 | S/S NUTS D.12 |
| 260503 | STAINL.STEEL FLAT WASHER D5 UN |
| 260511 | GROWER WASHER D.5 |
| 331913 | BRACKET |
| 440632 | DETERGENT INJECTOR |